

Terra Teacher Lab

Diversity of Place: Natural and Urban Landscapes

**June 24, 2009 Presentation by Amy M. Mooney, PhD
Columbia College Chicago**

Art Terms

- avant-garde
- cubism
- futurism
- figure/Ground relationship
- foreground, middle ground, background
- impasto
- nonobjective
- painterly
- perspective
- precisionism
- regionalism
- representation/abstraction

Contextual References and Influences

- Brooklyn Bridge, 1870–83
- skyscraper (steel cage)
- Elisha Otis (inventor of the elevator, 1853)
- transcendentalism
- Kandinsky, *Concerning the Spiritual in Art* (1913)
- Taos Colony, Santa Fe Railway
- Depression, Dustbowl

CLOSE READ



Joseph Stella (1877–1946)
Telegraph Poles with Buildings,
1917, oil on canvas, (36 1/4 x 30 1/4
in.), Terra Foundation for American
Art, 1999.139
(transparency provided)

CHRONOLOGICAL OVERVIEW



Earnest Lawson (1873–1939)
Brooklyn Bridge, 1917–1920, oil
on canvas, (20 3/8 x 24 in.),
Terra Foundation for American Art,
1992.43



Joseph Stella (1877–1946)
Brooklyn Bridge, c. 1919–1920,
oil on canvas, (84 x 76 in.),
Yale University Art Gallery
(Picturing America)



Walker Evans (1903–1975)
Brooklyn Bridge, New York,
1929, printed ca. 1970, Gelatin
silver print, (6 3/4 x 4 13/16 in.),
The Metropolitan Museum of Art,
1972 (Picturing America)



Georgia O'Keeffe (1887–1986)
Shelton with Sunspots, NY,
1926, oil on canvas, (48 1/2 x 30 1/4
in.), The Art Institute of Chicago,
1985.206
(AIC American Art Teachers Manual)



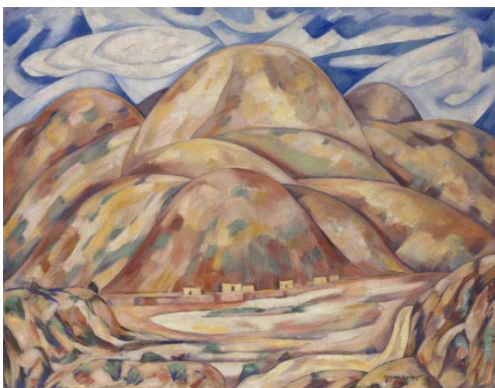
Alfred Stieglitz (1864–1946)
From My Window at the Shelton, North, 1931, gelatin silver print, (9 ½ x 7 ½ in), Philadelphia Museum of Art



Charles Sheeler (1883–1965)
American Landscape, 1930, oil on canvas, (24 x 31in.), The Museum of Modern Art, 166.1934 (Picturing America)



Charles Sheeler (1883–1965)
Ford Plant Production Foundry, 1927, gelatin silver print, (9 ¼ x 7 ¾ in.), Ford Motor Company Collection, The Metropolitan Museum of Art



Marsden Hartley (1877–1943)
Landscape No. 3, Cash Entry Mines, New Mexico, 1920, oil on canvas, (27 ¾ x 35 ¾ in.), The Art Institute of Chicago, 1949.549



Edward Hopper (1882–1967)
Nighthawks, 1942, oil on canvas,
(33 1/8 x 60 in), The Art Institute of
Chicago, 1942.51
(AIC American Art Teachers Manual)



Edward Hopper (1882–1967)
Sierra Madre at Monterrey, 1943,
watercolor with touches of wiping
over a charcoal underdrawing on
paper, (21 1/4 x 29 3/4 in.); Terra
Foundation for American Art,
1994.18

LESSON PLAN



Georgia O'Keeffe (1887–1986)
Black Cross, New Mexico, 1929
oil on canvas, (39 x 30 in.),
The Art Institute of Chicago,
1943.95
(AIC American Art Teachers Manual)

Reference Materials:

- *American Art Teachers' Manual*, The Art Institute of Chicago, 2008: 57.
- Georgia O'Keeffe, *Art Access*, The Art Institute of Chicago:
http://www.artic.edu/artaccess/AA_Modern/pages/MOD_4.shtml
- Georgia O'Keeffe: "*Her Life*," The Georgia O'Keeffe Foundation:
<http://www.okeeffemuseum.org/her-life.aspx>