

**Terra Teacher Lab**

**Identity: Defining Self & Society through Portraits**

**June 23, 2009 Presentation by Amy M. Mooney, PhD,  
Columbia College Chicago**

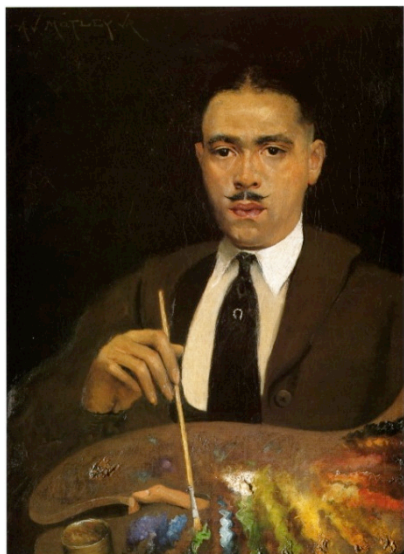
**Art Terms**

- abstraction vs. naturalism
- allegory
- Ashcan School and The Eight
- gaze
- German Expressionism
- Gothic
- impasto
- iconography
- Impressionism
- perspective, modeling
- pendant
- post-impressionism
- realism
- regionalism
- social realism
- Stieglitz Circle/291 Gallery

**Contextual References and Influences**

- Immigration Act of 1891, Quota Acts of 1921 and 1924
- Psychoanalysis, William James, *The Principles of Psychology* (1909)
- Mexican Revolution (begins 1910)
- WWI, 1914–18 (U.S. participation, 1917–18)
- Great Migration
- Harlem Renaissance
- Depression

**CLOSE READ**



Archibald J. Motley, Jr. (1891–1981), **Self-Portrait**, c. 1920; oil on canvas, (30 1/8 x 22 1/8 in), The Art Institute of Chicago, 1995.239

## CHRONOLOGICAL OVERVIEW



James McNeil Whistler (1834–1903), ***The Artist in his Studio***, 1865/66; oil on paper mounted on panel, (24 3/4 x 18 1/4 in.), The Art Institute of Chicago, 1912.141



Thomas Eakins (1844–1916) ***Portrait of Thomas J. Eagan***, 1907; oil on canvas, (24 x 20 in.), Terra Foundation for American Art, 1998.1



Robert Henri (1865–1921) ***Himself***, 1913; oil on canvas; (32 1/4 x 26 1/8 in.), The Art Institute of Chicago, 1924.907



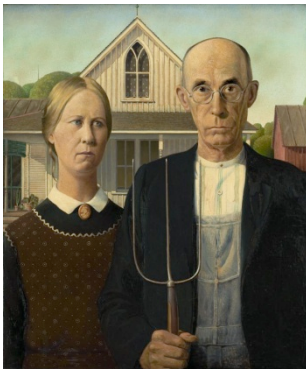
Robert Henri (1865–1921) ***Herself***, 1913; oil on canvas, (32 x 26 in), The Art Institute of Chicago, 1924.912



Marsden Hartley (1877–1943)  
**Painting No. 50**, 1914–1915;  
oil on canvas, (47 x 47 in.),  
Terra Foundation for American Art,  
1999.61



Marsden Hartley (1877–1943)  
**Portrait of a German Officer**,  
1914; oil on canvas, (68 1/4 x 41  
3/8 in.), Metropolitan Museum of  
Art, NY, 49.70.42



Grant Wood (1892–1942)  
**American Gothic**, 1930;  
oil on beaverboard, (30 11/16 x 25  
11/16 in.), The Art Institute of  
Chicago, 1930.934  
(AIC American Art Teachers Manual)



José Clemente Orozco (1883–  
1949), **Zapata**, 1930; oil on  
canvas, (78 1/4 x 48 1/4 in.),  
The Art Institute of Chicago,  
1941.35  
(AIC American Art Teachers Manual)



Charles White (1918–1979)  
***This is My Brother***, 1942;  
oil on canvas, (24 x 36 in.),  
The Art Institute of Chicago,  
1999.224

## LESSON PLAN



Beauford Delaney, (1901–1979)  
***Self Portrait***, 1944;  
oil on canvas, (27 x 22 in.), The Art  
Institute of Chicago, 1991.27

### Teacher Reference Materials:

- “Beauford Delaney,” *African American Art Teacher’s Manual*, The Art Institute of Chicago (1997): 49–51
- Biography of Beauford Delaney, Smithsonian American Art Museum:  
<http://americanart.si.edu/collections/search/artist/?id=1186>
- James Baldwin, “On the Painter Beauford Delaney” in *Transition*, No. 75/76, The Anniversary Issue: Selections from *Transition*, 1961–1976 (1997), pp. 88–89 Published by: Indiana University Press on behalf of the W.E.B. Du Bois Institute, Stable URL: <http://www.jstor.org/stable/2935393>